

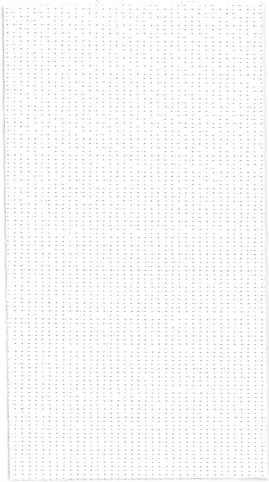
TexScreen® 8103

transparent



ALTEX®

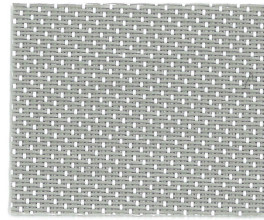
ARCHITECTURAL | SUNPROJECT™



↑ 8103-01



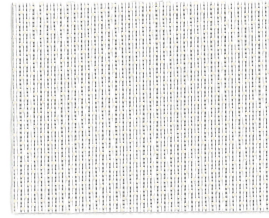
↑ 8103-02



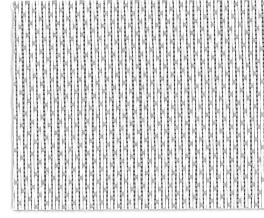
↑ 8103-03



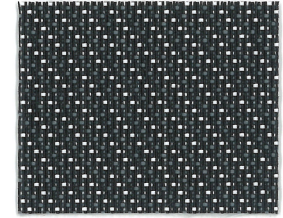
↑ 8103-07



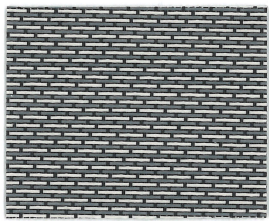
↑ 8103-02R



↑ 8103-03R



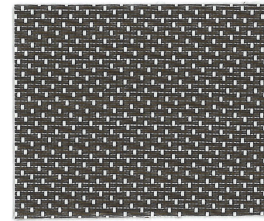
↑ 8103-07R



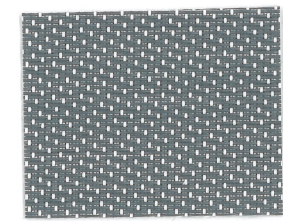
↑ 8103-09



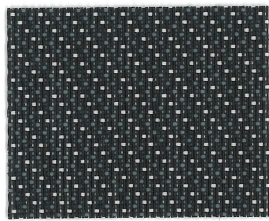
↑ 8103-10



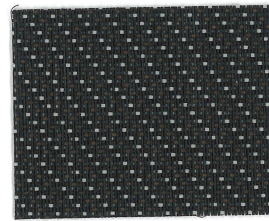
↑ 8103-05



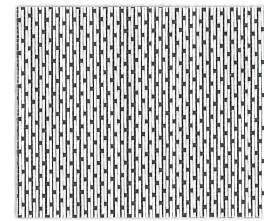
↑ 8103-04



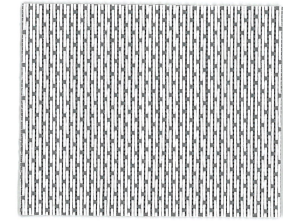
↑ 8103-09R



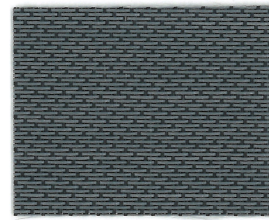
↑ 8103-10R



↑ 8103-05R



↑ 8103-04R



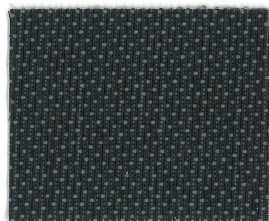
↑ 8103-08



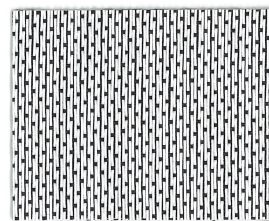
↑ 8103-06



↑ 8103-11



↑ 8103-08R



↑ 8103-06R



Roller



Specialty



Interior

Dye lot colours may vary.

TexScreen® 8103

transparent



Technical Specifications

PARAMETERS	TEXSCREEN® 8103 SERIES
standard width	320 cm (126")
standard roll length	27.4 m (30 L/yd)
weight	475 g/m ² (14 oz/yd ²)
fabric thickness	0.71 mm (0.028")
breaking strength	
warp	247 lbs/in.
weft	312 lbs/in.
composition	36% fiberglass / 64% vinyl on fiberglass

TexScreen® is a registered trademark of 7912854 Canada Inc. and used under license by Altex Inc.

Fire Classification: California U.S. Title 19 (small scale), NFPA 701 TM#1 (small scale), NFPA 101 (Class A Rating), IBC Section 803.1.1 (Class A Rating), BS 5867 Part 2 type B Performance, NFPA 701 TM#2 (large scale), CAN/ULC-S 109-03 (large and small scale), CAN/CGSB2-4.162-M80

Bacteria & Fungal Resistance: ASTM E 2180, AATCC30 Part 3, ASTM G21, ASTM D 3273, ASTM 6329; Includes Microban antimicrobial additives

Lead Free: RoHS/Directive 2002/95/EC, US Consumer Product Safety Commission Section 101, ANSI/WCMA A100.1-2007 for lead content, REACH (EC 1907/2006)

Solar Heat Control Properties Interior Use - Zero Degree Profile Angle

(In accordance with ASHRAE Standard 74-1988)

FABRIC	Solar optical properties				shading coefficient - screen with:			FABRIC	Solar optical properties				shading coefficient - screen with:		
	100%			%	single	insulating	100%			%	single	insulating			
	TS	RS	AS				TS		RS				AS		
8103-01	22	62	16	19	0.37	0.26	8103-01	22	62	16	19	0.37	0.26		
8103-02	5	58	27	13	0.38	0.28	8103-02R	18	33	49	16	0.63	0.40		
8103-03	9	53	38	9	0.40	0.29	8103-03R	11	49	40	10	0.49	0.34		
8103-04	8	44	48	9	0.46	0.31	8103-04R	8	19	73	8	0.70	0.45		
8103-05	7	42	51	8	0.47	0.32	8103-05R	8	14	78	8	0.74	0.46		
8103-06	7	40	53	8	0.48	0.32	8103-06R	6	10	84	6	0.76	0.47		
8103-07	7	27	65	7	0.64	0.41	8103-07R	7	10	83	7	0.77	0.47		
8103-08	5	13	82	5	0.74	0.46	8103-08R	5	6	89	5	0.78	0.48		
8103-09	6	24	70	6	0.67	0.43	8103-09R	6	8	86	6	0.77	0.48		
8103-10	6	17	77	6	0.71	0.45	8103-10R	6	7	87	6	0.78	0.48		
8103-11	5	4	91	5	0.80	0.49	8103-11	5	4	91	5	0.80	0.49		

TS = Solar Transmission
RS = Solar Reflectance
AS = Solar Absorptance

TV = Visible Light Transmission

1/4" CL = 1/4" Clear Glass

1" HA = 1/4" Heat Absorbing Glass

The shading coefficient represents the percentage of solar heat gain coming into a room through the blind and glazing. It is marked between 0 and 1. A low percentage indicates a good protection against heat gain. Darker colours provide maximum glare reduction and visibility because they diffuse less light. For complete technical information, test results, performance specifications and larger samples, contact our Technical Department. Performance evaluations conducted by Matrix Inc.

☒ Openness Factor (OF): Ratio of area of holes to the total area measured.

altex.ca Toronto 888.836.6980 | Vancouver 888.980.9899 | Montreal 800.363.5930



OF 3%



Flame Resistant



Antibacterial



Lead Free Fabric



Greenguard®



TexScreen® 8103 interior shading system